

H-450 Directional Sound System



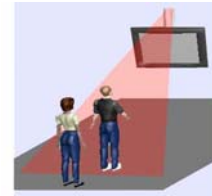
Imagine the ability to shine sound like a torch...well now you can with the H-450 Directional Sound System. Up until now all loudspeakers have always lacked the ability to accurately direct their sound, generally dispersing the audio over a wide area. When several different audio contents are playing or looping near staff traditional speakers create a very frustrating environment.

Traditional Speaker



A traditional speaker system inherently disperses sound in a more omni-directional pattern, the sound can be heard from anywhere in the same room.

H-450

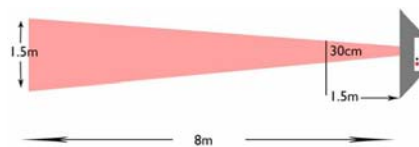


H-450 increases the content impact by zoning your sound into a specific area. The sound column is very controlled, with little leakage off axis.

Whether in a digital signage network, interactive exhibit or exhibition the H-450 will accurately pinpoint your audio. No more sound clutter or audio confusion.

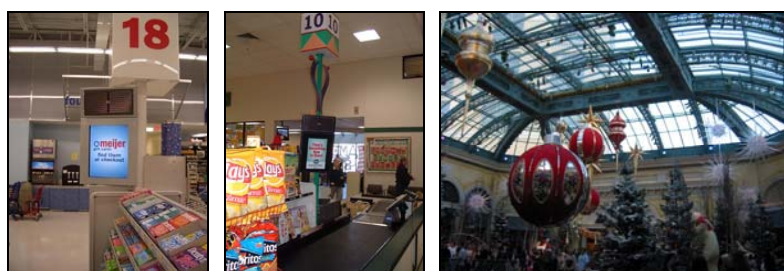
Controlled Noise

The system gives you complete sound control, putting your message exactly where you want it to go with minimum noise pollution in unwanted areas. The H-450 Beam Dispersion (Vertical) @ 3kHz:-



Sounds like a Spotlight

The H-450 can focus sound in a tight torch like beam. Pinpoint sound for Digital Signage, Kiosks, POP, Museums, Displays and Exhibits.



Easy Installation

Small, lightweight and unobtrusive the H-450 will fit into any environment. The fully active design requires no external amplification, just plug in an audio source from any player equipped with a line out.



Manageable Solution

H-450 is a truly cost effective directional audio solution. Bringing life into your content and delivering your message where you want, without disturbing others.

H-450 Virtual Mode

H-450 sound can be bounced off any solid reflective surface and creates a virtual "speaker" – the unit can be mounted some distance away and aimed towards a wall, the listener will perceive the sound to be coming from that wall.



Direct Mode



Virtual Mode

Suggested Installations



To maximise the units directionality point the speaker directly onto the floor, creating a controlled sound shower. Ideal for displays where only 1-2 people would be in the desired area.



Mounted at an angle and increasing the distance from the listeners will create a focused sound cone. You will capture more people and still control any un-wanted sound.

*A minimum distance of 1m from the H-450 speaker is recommended.

POWER REQUIREMENTS		H-450 SPECIFICATION
Wattage:	100 watts maximum	
ELECTRICAL RATINGS:		
Input	100-240VAC	
Power Supply	48V-60Hz	
Output	48V DC @ 2A	
MECHANICAL:		
Physical Dimensions (DxHxW):	88.1 x 151.4 x 311.1 3.47 x 5.96 x 12.25"	
UNIT WEIGHT:		
H-450	1.5Kg (3.3lbs)	
ENVIRONMENTAL:		
Operating Temperature:	0 C to 40 C (32 F to 10 F)	
Storage Temperature:	-20 C to 50 C (-4 F to 122 F)	
Operating/Storage Humidity:	0 to 95% (non-condensing)	
ULTRASONIC EMITTER:		
Type:	ATC proprietary PVDF Piezo Film device	
AUDIO:		
Impedence	10K	
Input Connector	2 RCA style connectors	
System Configuration	Monaural (2 channel summed)	
Max Input for Max Output	1.0Vp-p, each channel @ 10kHz	
Max SPL Output	85dB @ 1 meter	
Amplifier	Class D Full bridge (80W)	

HSS460 Directional Speakers



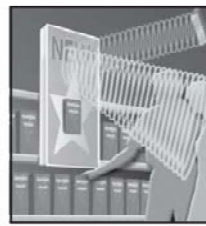
Cut Through The Noise!

Hyper Sonic Sound is the revolutionary audio system that is able to emit sound in a tight column to a specific area without imposing on nearby activities i.e., only those within the beam will hear the audio. Sound does not spread to the sides or rear of an HSS unit, eliminating the problem of uncomfortable and unwanted noise pollution produced by conventional speakers.

In addition to this unique attribute, HSS can also be reflected off surfaces, creating a virtual sound source.



Direct Mode



Virtual Mode

The high precision targeting of the H460 significantly reduces the levels of noise pollution in both open and confined spaces and anywhere else ambient noise is an issue. With twice the output of the H450, the H460 at 91 dB doubly

ensures that your intended audience receives the message conveyed through the system clearly. There is no need for any external amplification: just connect a line source from your existing audio/paging system.

Whether at a point of sale or information point in a museum the H460 offers display point audio that is so focused that only the intended listener will hear the communications emanating from the speakers. The system transforms these areas into consistent virtual listening areas without the discomfort and variability of sound intensity from conventional loudspeakers.

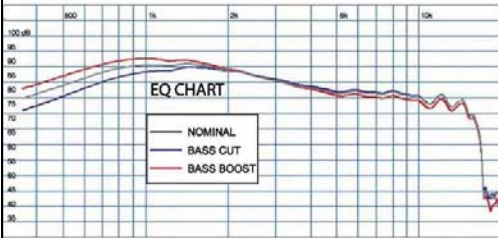
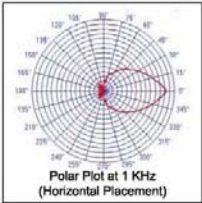

Applications

The unique nature of this product enables an endless range of different applications:

- Store displays/Point of Purchase advertising
- Digital signage
- Video conferencing
- Trade shows/exhibitions
- Museums and Galleries
- Theme parks

This technology can be used where communications are really needed but noise abatement requirements preclude general broadcasting.

Specification

ELECTRICAL AC Power Cord Length	1.83 Meter (6 feet)
POWER REQUIREMENTS Wattage	100 watts maximum
ELECTRICAL RATINGS Input Universal Power Supply Output	90V – 264VAC 48V – 60Hz 48V DC @ 2 Amps maximum
MECHANICAL Physical Dimensions H460	Depth (Front to Back); Height (Top-Bottom); Width (Left-Right) 75 mm (2.96") x 310 mm (12.2") x 310 mm (12.2")
UNIT WEIGHT H460	4.5 kg (9.9 lbs)
UNIT COLOR BLACK ■	Catalog No. HSS-H460-B
ENVIRONMENTAL Operating Temperature Storage Temperature Operating Humidity Range Storage Humidity Range	0°C to 40°C (32°F to 104°F) -20°C to 50°C (-4°F to 122°F) 0 to 95% (non-condensing) 0 to 95% (non-condensing)
ULTRASONIC AND DSP PROCESSING Carrier Frequency Modulation Method	Variable 40 - 50 kHz Proprietary Dynamic Carrier
ULTRASONIC EMITTER Type	ATC proprietary PVDF Piezo Film device
AUDIO Impedance Input Connector System Configuration Max Input for Max Output	10 Ohms 2 RCA style connectors Monaural (2 input channels summed together on the RCA connectors) 160 mVrms x1 channel or 80 mVrms x2 channels
SYSTEM Max Audio SPL output	91 dB @ 1kHz/1 meter
POWER AMPLIFICATION Amplifier Type Amplifier Power Output Potential	Class D full bridge 100W
  	

LS01 664 Panel Speaker



Speaker, Full Range 15W 4OHM

Specification

- Depth, external:31mm
- Frequency response, lower limit:200Hz
- Frequency response, upper limit:20kHz
- Impedance:4R
- Length / Height, external:66.5mm
- Power, RMS:8W
- Width, external:66.5mm
- Cut-out size, panel:61mm
- Diameter, panel cut out:61mm
- Diameter, panel cut-out:61mm
- Power, max:15W
- Size, nominal:2S"
- Sound level SPL:88dB

VSP Speaker Range

- Injection moulded weather resistant cabinet
- Strong bass response with high power/size
- Suitable for indoor/outdoor applications



The VSP range is specifically designed for applications that demand quality sound reproduction with maximum installation flexibility. The range consists of four sizes of compact two-way music and speech loudspeakers in weather resistant casings.

The VSP range also comes with a multi position U shaped mounting bracket for optimum installation flexibility.

Model Details:-

	VSP 302	VSP 502	VSP 602	VSP 802
Enclosure Type	Infinite Baffle		Bass Reflex	
Frequency Range	80 – 20 KHz	70 – 20 KHz	60 – 20 KHz	50 – 20 KHz
Sensitivity (1w / 1m)	86db	88db	89db	89db
Nominal Impedance	8 ohm			
Long Term Power	40 watts	50 watts	60 watts	85 watts
Weight (per speaker)	1 Kg	2.5 Kg	3.6 Kg	7 Kg
Terminal	Spring Clip		Binding Post	
Bass Driver	90 mm	130 mm	165 mm	200 mm
HF Driver	13 mm		25 mm	
100v line option	Yes 1w/2w/4w /7.5w/15w switchable	Yes 15w/20w /25w switchable	No	Yes 3w/10w/25w /45w switchable

Dual-Parabolic Sound Focusing Speakers

- Patented dual-parabolic dome for maximum sound focus
- Zero reflection enclosure technology for superior sound
- Single point mounting for ceilings, walls & kiosks
- Engineered components for maximum clarity
- Mono or stereo models for multiple applications
- Custom colours and sound sleeves available

FP633

30" diameter dome, 5.25" 2-way mono driver

Functions - Patented sound focusing dual-parabolic dome technology for contained music and messaging in loud venues. The full range sound and bass provide a wider hot spot for multiple listener sites.

Applications - Focused audio with increased bass for kiosks, trade shows, plasma displays and vocal presentations.



FPS30

30" diameter dome, stereo 2 x 2" drivers.

Functions - Patented dual-parabolic stereo dome with 3D effects, a dramatic hot spot, clear crisp stereo separation and minimal bleed.

Applications - Tightly focused audio for learning centres, listening stations, sound effects and museums.



FPS20

20" diameter dome, stereo 2 x 2" drivers.

Functions - Smallest patented dual-parabolic stereo dome available.

Applications - Tightly focused audio for retail, display, trade shows mobile displays, video displays and hidden installations.

